

NOTES:

1. THE ENTIRE INSTALLATION MUST BE INSPECTED AND APPROVED BY THE C.T.M.A. AND THE ALLEGHENY COUNTY HEALTH DEPT.
2. ALL MATERIALS MUST BE INSTALLED IN ACCORDANCE WITH THE ALLEGHENY COUNTY PLUMBING CODE, AND IN ACCORDANCE WITH THE C.T.M.A. RULES AND REGULATIONS - EXHIBITS I & IA .
3. BEFORE WORK IS STARTED A PLAN MUST BE FILED WITH THE ALLEGHENY COUNTY HEALTH DEPARTMENT PLUMBING DIVISION AND AN APPLICATION MUST BE FILED WITH THE C.T.M.A..
4. CLEANOUTS SHALL BE INSTALLED AT 50' MAXIMUM INTERVALS FOR 4" PIPE OR 100' MAXIMUM INTERVALS FOR 6" PIPE, AND AT CHANGES IN DIRECTION GREATER THAN 45°, AND WHEN DEPTH EXCEEDS 4'.
5. TRANSITION BETWEEN 6" PIPE TO 4" PIPE MUST BE MADE IN 18".
6. VERTICAL RISER INSTALLED AS REQUIRED BY THE C.T.M.A. RULES AND REGULATIONS.
7. ALL PIPING & FITTINGS SHALL BE: PVC SDR 35; PVC SCH. 40; ABS SCH. 40; CAST IRON EXTRA HEAVY & SERVICE WEIGHT; CLAY EXTRA STRENGTH PREMIUM JOINT; OR APPROVED EQUAL.
8. ANY LINES INSTALLED IMPROPERLY OR COVERED WITHOUT INSPECTION MUST BE REMOVED OR UNCOVERED AT THE PROPERTY OWNER'S EXPENSE.
9. ALL COMMERCIAL BUILDINGS SHALL BE MINIMUM 6" PIPE OR LARGER. ALL RESIDENTIAL BUILDINGS HAVE OPTION TO INSTALL 4" OR 6" PIPE.
10. THIS DETAIL (EXHIBIT I-A) IS APPLICABLE TO NEW BUILDING CONSTRUCTION WHERE THE LATERAL IS GREATER THAN 6' DEPTH. A MINIMUM 3 FEET OF COVER OVER LATERAL IS REQUIRED.
11. CONCRETE ENCASUREMENT REQUIRED FOR ALL CLAY TRAPS, MINIMUM 4" AROUND AND UNDER, OPTIONAL FOR ALL OTHERS.

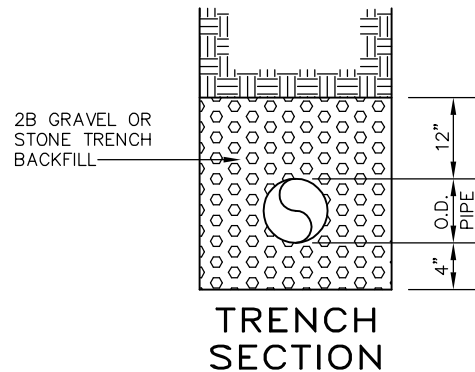


EXHIBIT I-A

**COLLIER TOWNSHIP
MUNICIPAL AUTHORITY
SANITARY SEWER
LATERAL CONNECTION**

NIRA Consulting Engineers, Inc.